

SE London Green Chain
Management Plan
2012- 2017

Final Draft version

July 2012

CONTENTS

PART ONE	<i>What is the Green Chain?</i>	1
	Introduction	1
	How the Green Chain operates	1
PART TWO	<i>Green Chain Service Provision in SE London</i>	5
	Existing service	5
	Service issues	5
PART THREE	<i>Looking Forward</i>	8
	Current issues and project development	8
	Green Chain objectives	9
PART FOUR	<i>Getting There</i>	22
	Priorities	22
	Planned activities	22
	How will this be delivered?	23
	Action plan	23
	Evaluation	24
	Table of actions	25
APPENDICES		
	1. References	34
	2. Borough policies	35
	3. Regional Policies referring to the Green Chain	38

PART ONE *What is the Green Chain?*

Introduction

- 1.1 In 1977 some 300 open spaces in South East London were designated as Green Chain open spaces to give extra protection against inappropriate development in the London Boroughs of Bexley, Bromley, Royal Greenwich and Lewisham. In 2008 a fifth borough- Southwark- was welcomed to the partnership. The open spaces all have a strategic value as they are connected to form a 20-mile long swathe of land through South East London. Within the Green Chain open spaces can be found ancient woodlands, historic parks and landscapes, commons, heath, farmland and recreation grounds. This continues as a collaborative initiative between these 5 boroughs.
- 1.2 In the early 1980s the strategic significance of these open spaces was further reinforced with the introduction of a network of sign-posted footpaths. More than 50 miles of footpaths link many of the open spaces and create a recreational resource of regional significance, see Figure 1.

How the Green Chain operates

- 1.3 The Green Chain is managed and co-ordinated by a Joint Officers' Working Party comprised of council officers from planning, highways, and leisure services departments of the five boroughs, with formal decisions taken through the Member's of individual authorities.
- 1.4 In 1993 a Project Officer was employed to implement many long standing proposals and develop new initiatives to further enhance the project. The Working Party acts as his steering group.

Figure 2 illustrates how the Green Chain is managed.

What people think about the Green Chain Walk...

- **93%** think it's good for your **health**
- **83%** think it helps **protects the natural environment**
- **83%** think it's **convenient** to visit and use
- **78%** think its **educational**
- **78%** think it provides **access to open spaces** in SE London
- **69%** think it provides **recreational opportunities**
- **68%** think it's an **alternative means of getting around**

Figure 1 The SE London Green Chain open spaces and walking network

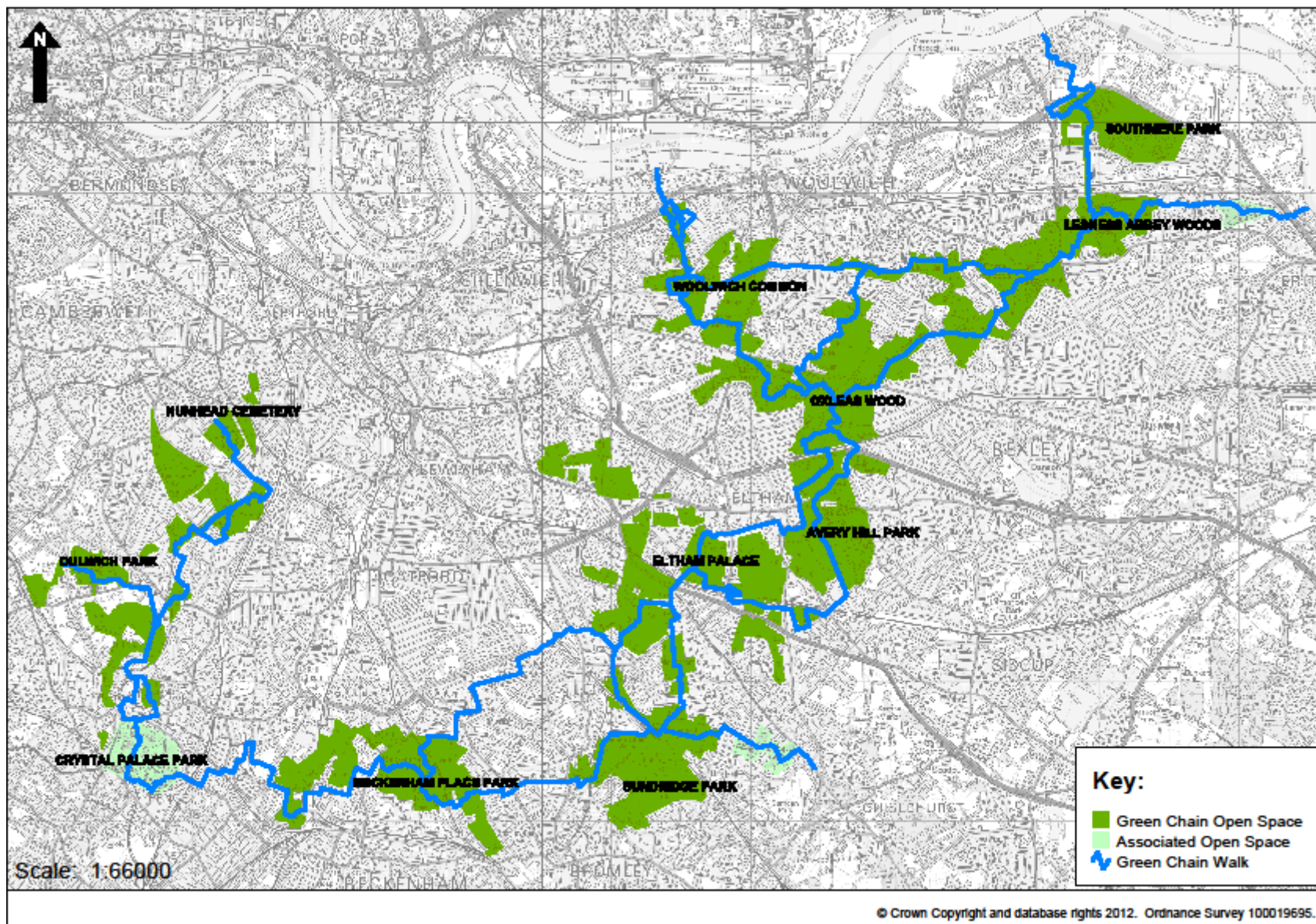


Figure 2. Management Structure of the Green Chain

Partner Local Authorities	Takes formal decisions on the strategic direction of the partnership through Members.
Green Chain Working Party	Represents the Green Chain in each of the boroughs. Sets long term management programmes and acts as a steering group for the project officer. Monitors Green Chain Operational Fund and planning proposals affecting the Green Chain Open Spaces.
Green Chain Project Officer	Carries out day-to-day management of the Green Chain and progress projects identified by the Working Party.
Friends of the Green Chain	Reports any issues impacting on the Green Chain to the Project Officer, acting as the partnership's "eyes and the ears".

1.5 The Green Chain's development has depended on a successful partnership between the boroughs and the continued financial contributions made to the Joint Operational Fund. Within the boroughs, officers on the Working Party are the main link between Green Chain boroughs, liaising with elected councillors, other council staff and members of the public. The Green Chain public open spaces are managed by the partner boroughs while planning issues are the responsibility of each of the boroughs, these close relationships are essential for the long term success of the Green Chain.

1.6 The aim of the partnership is to achieve and promote the objectives and policies set out in the 1977 Green Chain Policy Document. The objectives are:

- To improve and encourage the provision of suitable recreational facilities, with an emphasis on those serving a wide range of South East London and/ or requiring open land.
- To safeguard the open land from built development, and to maintain its structural contribution in providing a visual break in the built up area of London.
- To conserve, enhance and raise public awareness of the visual amenity and ecological aspects of the landscape.
- To improve public access to and through the area.
- To promote an overall identity for the area in order to increase public awareness of available recreational facilities

- To encourage the collaboration and co-operation of the various public and private agencies, owners, organisations, clubs, etc. in the area to achieve the above objectives.

1.7 The policy objectives set out in 1977 continue to be as relevant today as they were then. These can be summarised as a mission statement for the Green Chain:

The London Boroughs of Bexley, Bromley, Royal Greenwich, Lewisham and Southwark working in partnership to safeguard, enhance and promote the Green Chain open spaces for the enjoyment of all.

Achievements from the last management plan:

The previous plan set out 11 policy areas to be developed backed by 39 actions. 34 of these actions have either been completed or are underway. Among these actions there have been clear achievements, namely:

- Secured over £750,000 from external sources
- Raised the profile of the Green Chain regionally through an annual walking festival, marketing campaigns and the extension to Southwark;
- Supported the development and delivery of the East London and All London Green Grid;
- Enabled targeted service provision to under-represented groups through a new health walks pack and school's resource directory;
- Became involved in regional fora on transport, open space development and biodiversity;
- Engaged with local communities through outreach and consultation activities;
- Established links with over 50 primary schools through an annual outreach project;
- Successfully demonstrated the role of the Green Chain Walk in integrated transport policy thinking.

PART TWO *Green Chain Service Provision in SE London*

Existing service

- 2.1 The Green Chain has continued to develop a range of services that fulfil its original objectives while responding to change, so that the strategic network of open spaces can be fully enjoyed by SE Londoners.
- 2.2 There are core services for all the partner boroughs, namely:
1. Responding to planning matters affecting the open spaces
 2. Managing the sign-posted Green Chain Walk to a quality standard
 3. Promoting the scheme through the range of publicity material
 4. Maintaining beneficial relationships between the partner boroughs
- 2.3 At the same time, by responding to public demand and from taking advantage of opportunities new services have been developed. These include:
1. Establishing projects to reach new or under represented audiences
 2. Working with health professionals to improve peoples' health through walking
 3. Raising funds from external sources to finance new projects
 4. Developing projects to integrate walking with other modes of transport
 5. Working with schools and other education providers to encourage outdoor learning
 6. Cultivating new relationships that benefit the Green Chain
- 2.4 The initiative is managed centrally by the Project Officer, making efficient use of the Joint Operational Fund and a point of contact for partner boroughs and the public.

Service issues

- 2.5 The last five years have seen positive developments to the Green Chain. The consolidation of our own research and policy formed the previous Management Plan and set out the direction for the Project. A clear brand identity and suite of promotional materials has already been established and so enabled the Project to develop in areas of health, accessibility, strategic planning, biodiversity and transport.

2.6 Progress has come about from both taking an active role in developing projects and by taking advantage of changing situations and policy directions. These include:

- The emergence of the All London Green Grid and the Thames Gateway Parklands spatial plan, comprising a range of green infrastructure proposals;
- The hosting of the 2012 Olympic and Paralympic Games in London, and the Government's Legacy Action Plan;
- The Coalition Government's "Big Society" and "Localism" agenda, and the growing importance attached to these initiatives to support and deliver environmental improvements;
- Government concern to increase physical activity and combat growing levels of obesity nationally.
- The emergence of spatial planning being progressed through Local Development Frameworks, and the adoption of the Government's National Planning Policy Framework to promote sustainable growth;
- The development, adoption and delivery of the boroughs' Open Space Strategies, Sustainable Community Strategies, Biodiversity Action Plans and Rights of Way Improvement Plans;
- The re-appointment of a Mayor for London committed to improving sustainable modes of transport in the capital to include cycling and walking;
- New projects discussed in more detail in Part Three.

2.7 Four of the five partner boroughs currently contribute to the Joint Operational Fund, which finances both the signage of the network and a dedicated Project Officer. The proportion paid by each borough is calculated by the size of the population living within 2 miles of the Green Chain.

2.8 In 1999, Bexley took the decision to remain at an earlier funding level when contributions were raised. Bromley decided to withdraw their contribution to the Joint Fund in 2011. Member's agreed that the level of service received would be commensurate with the level of contribution, which in Bexley's case is equivalent to a part time post.

- 2.9 Notwithstanding the recent reduction in its core funding the Green Chain project has been notably successful in attracting external funding to finance new services, with over £600,000 awarded through Transport for London over the past 5 years, and potentially a further £975,000 for projects over the coming 5 years.
- 2.10 While the appointment in 2008 of a temporary (2 year) Access Officer enabled a number of additional projects including the Southwark extension to be delivered, the longer term establishment of further new services is likely to be affected by the ability to manage expansion within existing resources. The Joint Operational Fund provides the “core funding”, and continues to give a level of stability to enable long-term planning and further fund raising opportunities.
- 2.11 Clear benefits are passed onto the partner boroughs from the work of the Green Chain. Successful fund raising has added further value to borough contributions, while publicity and promotion has boosted tourism and leisure interest in the open spaces. For local communities, the service has a role in improving peoples’ health and well being, and increasing social inclusion. This service is delivered on core borough contributions currently worth £59,055. In comparison the five partner boroughs contribute in the region of £1.5 million¹ to the Lee Valley Park, demonstrating that the Green Chain provides clear value to the partner boroughs.

¹ Contributions to the Lee Valley Park levy by Green Chain partner borough for 2012/13: Bexley £242,895; Bromley £384,879; Royal Greenwich £232,600; Lewisham £255,940; Southwark £287,183

PART THREE ***Looking Forward***

Current issues and project development

3.1 The Green Chain has identified a number of contemporary issues that fit within its aims and are considered in this section for development. While the global economic recession in the U.K and Europe has resulted in severe cut-backs to local authority funding, it also provides an opportunity to review the existing funding and governance structures for the partnership.

3.2 A major issue that will influence future delivery of certain aspects of the management plan is the on-going outcome of annual bids to Transport for London (TfL), and those Green Chain projects currently funded through partner authorities' transport plans. This source of funding is all the more critical given the demise of the Walk London and South East London Transport Strategy (SELTRANS) partnerships, which previously sponsored the delivery of a range of new services on the Green Chain.

3.3 A second major issue is the All London Green Grid, and how this emerging green infrastructure initiative can support the delivery of the management plan. Specific project proposals for funding have been agreed by the Working Party from a rolling programme that will be updated every 3 years.

3.4 The Olympic Legacy provides opportunities for the Green Chain to secure improvements to the recreational and sporting value of the open spaces, and includes the Greenways for the Olympics and London (GOAL) initiative and proposals to link the Green Chain Walk to the Olympic Site at Royal Greenwich Park.

3.5 The section below outlines the issues that the Green Chain addresses within the Action Plan (see page 24). The resolution of these issues form specific objectives for the next five years, and are based on the Policy Document objectives in Part One.

Green Chain objectives

Strengthen the Green Chain financial base

3.6 Existing levels of funding are set out in Part Two. The inclusion of Southwark as a new partner in April 2008 augmented the Green Chain's financial base, however this was subsequently reduced in 2011 by Bromley's withdrawal from the Joint Operational Fund. The Joint Operational Fund is critical for the partnership's ability to secure match funding, and as such Bromley Members will be encouraged to review their decision when their circumstances permit. Attracting further finances to the Green Chain is also a priority for the continued expansion and delivery of new services, but set within the context of the straitened economic climate of the present time.

3.7 The fund raising strategy sets out the most efficient means for attracting funding. This has proved effective in securing external funding from a range of bodies including the Heritage Lottery Fund and Transport for London. Funding bids have been identified for a wide range of green infrastructure projects within Areas 5 -7 of the All London Green Grid, including bids of £475,000 in Area 6 by the Green Chain Officers' Working Party.

3.8 Future proposals include a bid to improve connectivity and access to and between the Green Chain open spaces. The Olympic Legacy, European funded projects and the Mayor of London's "Great Outdoors" programme provide further opportunities to lever in funding through working in partnership over the next 5 years. Working with local community groups and transport and regeneration charities such as Sustrans and Groundwork may also provide access to previously untouched sources.

3.9 Notwithstanding its success to date in securing external funding, the Green Chain project remains vulnerable to the economic climate and the precarious nature of short-term funding streams once these projects come to an end. A more secure financial base than the present arrangement may be achieved through seeking Charitable Trust or Community Interest Company status and/or a diversion of the Lea Valley levy to the SE London Green Chain. This should be explored alongside other London boroughs who are taking this forward as part of the Wandle Valley and Colne Valley Regional Park proposals.

Raise the profile of the Green Chain across the sub-region

- 3.10 A prime function of the Green Chain is to raise public interest in the open spaces. To this end a range of promotional materials has been produced including audio trails, leaflets, route guides, travelling displays, on site information panels and a dedicated web site and Information Line: Collectively this has resulted in significant public interest.
- 3.11 It is proposed that the Marketing Advisory Group be reformed and the Marketing Plan for the Green Chain be updated. This will also enable the partnership to create an Audience Development Plan, so that new social media audiences can be reached. Investment will continue through a range of media including the internet and video, bus and train poster campaigns, MP3 audio guides and local radio broadcasts.
- 3.12 Membership of Green Space has enabled promotion of the Green Chain to a wider audience through their “Love Parks” week and other campaigns. Walk London and South Eastern Railways also actively promote the Green Chain through their own suite of promotional materials, adding considerable value and exposure to the project both within the capital and beyond. The partner local authority communication and web teams provide further opportunities to promote the Green Chain as a resource for health and well-being across the sub region.
- 3.13 Targeted promotional campaigns through Creative Studios (web sites), Take One Media (leaflets), CBS Outdoor (bus and tram posters), LBV Television (film, and road-shows) and local press and radio have raised the profile of the Green Chain across the sub region, and will continue to be utilised where funding permits. Marketing opportunities that reflect changes in technology and life-style- in particular the use of social networking sites- will continue to be exploited.
- 3.14 Further investment of finances and resources should be made for the implementation of a new Marketing Plan. The Green Chain Marketing Advisory Group and other stakeholders will have a role to play in progressing this.

Mitigate the impact of climate change.

3.15 There is now a widely recognised need to mitigate the impacts of climate change. The potential effect of unrestrained growth on the environment was anticipated when the Green Chain was created some 30 years ago. Its contribution has been achieved most notably through the planning system by ensuring the protection of over 300 open spaces (see below), and the critical role they play in climate change.

3.16 At the sub-regional level the SE London Green Chain partnership continues to have an important role to play by supporting and encouraging a number of objectives: These include; Managing increased flood risk; Conserving and enhancing scarce resources, in particular water resources; Offsetting urban heat island effects; Meeting the open space needs of a growing population; and making energy production, food production and waste management local.

3.17 The Green Chain can become a sub-regional model, transforming parks into open spaces that serve the local communities they support by being managed for flood risk, sport, leisure, recreation and nature conservation: The pioneering examples at Sutcliffe Park, Chinbrook Meadows and along the River Ravensbourne provide “exemplar” models of how this can be achieved.

3.18 The All London Green Grid in its Supplementary Planning Guidance and Area Frameworks sets out how this mitigation can be further realised on the Green Chain open spaces over the coming years through a range of measures.

Ensure the continual protection of the Green Chain Open Spaces as a multi-functional resource

3.19 The Green Chain was conceived for planning reasons, protecting SE London’s open spaces from inappropriate development. The original Green Chain Policies have now been largely assimilated into the partner boroughs’ Unitary Development Plans and emerging Local Development Frameworks (see Appendix Two). All Green Chain open spaces are now identified as Metropolitan Open Land, the urban equivalent of Green Belt and the highest level of protection against harmful development.

3.20 The Working Party continues to monitor and comment on all sensitive planning applications and strategic documents relevant to the Green Chain open spaces, including the Mayor for London's spatial development strategy (the "London Plan") and Transport Plan. Responses have been made to these Mayoral Plans and to the boroughs' emerging Local Development Framework documents and Open Space Strategies.

3.21 There has been growing recognition of the multi-functional role of urban parks and open spaces, heralded by a key report ² published by the former Countryside Agency³. Regionally, this multi-functional vision has been translated through a number of policy documents including the Mayor of London's *Strategic Parks Report (2006)*, the *All London Green Grid*⁴ (2012) and the *London Plan (2012)*.

3.22 The importance of protection has been underpinned at the national level by the Natural Environment and Rural Communities Act 2006, and by Planning Policy Statements (PPS) on Biodiversity Conservation (PPS 9) and Flood Risk (PPS 25). In terms of protection, it is uncertain what impact their recent replacement by the Government's National Planning Policy Framework will be. However a review of the Green Chain Policy Document is needed to guide future management and provision of open space within the Green Chain.

3.23 The cultural and heritage value of the Green Chain is underlined at the national level through the work of Natural England⁵ in highlighting the unique contribution of the landscape in giving a locality its 'sense of place'. The Green Chain is supporting this work sub-regionally through its participation in the All London Green Grid which is seeking to enhance the heritage of the Green Chain open spaces through a range of project proposals.

² *Countryside In and Around Towns (CIAT): A vision for connecting towns and country in the pursuit of sustainable development*

³ The Countryside Agency and English Nature were merged in 2007 to form Natural England

⁴ The Green Grid is the London delivery end of Government's 'Greening the Gateway' strategy.

⁵ Landscape Character Assessment is a tool that helps to identify the features that give a locality its 'sense of place' and pinpoints what makes it different from neighbouring areas.

Develop an effective walking network for the Green Chain

- 3.24 The walking network has been improved to the level where it now corresponds to standards of best practice set out in Walk London's design guide manual⁶. This guarantees that most people can navigate the Green Chain Walk with confidence and explore the Green Chain open spaces and beyond. Given the sensitive nature of some sites (including nature reserves and Sites of Special Scientific Interest), improvements to physical walking conditions will be made that are sympathetic to the environment of the area.
- 3.25 A further development of the network has been the extension of the Green Chain Walk into Southwark borough, with an additional spur into Lewisham. In total these links have created an additional 7 miles, connecting the strategic route to key visitor attractions at the Horniman Museum and Dulwich Picture Gallery. Shorter circular trails have also been constructed at Charlton and Mottingham to broaden the appeal of exploring the Green Chain for the less physically mobile.
- 3.26 Proposals to extend the Green Chain Walk from Eltham Palace to Greenwich Park will be developed as part of the 2012 Olympic Legacy, and in consultation with stakeholders including the Royal Parks and community groups.
- 3.27 The introduction of an annual Green Chain Walking Festival and a new health walks pack (featuring 12 self-guided circular trails) promotes use of the Green Chain to a wider audience. These two initiatives support a key management aim of providing a service that is available to all. Subject to funding, the walking festival will be re-instated on an annual basis.

Develop the Green Chain as a regional resource

3.28 The Green Chain already plays an important role in promoting and encouraging use of South East London's open spaces. The Green Chain's strength lies in the variety of benefits it has to offer the communities of SE London and much has been done to brand the project, lending a sense of cohesion and collective identity to both the open spaces and the opportunities they offer.

3.29 The Green Chain Policy Document realised the value and importance of a walking route to help people enjoy and access the open spaces, and much has been done to make this happen. Other opportunities for cycling and horse riding will be explored, while remaining suitably segregated from walkers.

3.30 As a sub-regional project, the Green Chain is in a good position to aid in the delivery of a range of key areas within partner boroughs' strategy documents and at a wider regional level (see text box above). The Thames Path and Waterlink Way are both examples of strategic cycle/footpath routes that connect with the Green Chain to extend the provision of connected green space and provide mutual benefit. Through its chairing and co-ordination of the All London Green Grid Area steering group meetings, the Green Chain will continue to cultivate links with other organisations, agencies and community groups to benefit from closer working.

3.31 The value of the Green Chain will continue to be recognised at a strategic level, consolidating and building relations with agencies, organisations and groups.

Strategic Links

The Green Chain has a role to play in these strategic areas:

- Sustainable Community Strategies
- Local Agenda 21
- Tourism
- Parks and open spaces
- Sports development
- Social inclusion
- Biodiversity Action Plans
- Education
- Local Development Frameworks
- Transport Plans
- Health Improvement Programmes
- Regeneration
- Best Value
- London Plan

⁶ *Delivering the London Strategic Walk Network: A design guide manual: Walk London, 2008*

Increase community involvement in the Green Chain

3.32 The Green Chain open spaces are a resource enjoyed by the local communities across SE London. At the same time there has been a clear emphasis on dialogue and consultation with the public. Increasing involvement with local communities can help improve services through feedback, greater liaison, practical community action and a sense of ownership which itself can have its own benefits. To this end the Green Chain will (in conjunction with land managers) consult with community groups on physical enhancements proposed by the Green Chain partnership to the open spaces.

3.33 The Green Chain continues to develop and improve relations with community groups involved in managing and promoting local Green Chain open spaces and will seek to engage them in the implementation of the Management Plan; this is apparent through community participation in organising and delivering events and guided walks as part of the Green Chain walking festival.

3.34 The Green Chain web site provides an effective tool for linking to the wider community, both in raising the profile of park-user groups and in promoting their activities. The quarterly events programme introduced in 2011 and distributed electronically has resulted in greater collaboration with local groups and the wider community that can support and deliver the objectives of the Green Chain.

3.35 The annual Green Chain road-shows and town centre parades have also enabled the partnership to reach out to the community and promote its benefits to a wider audience, thereby encouraging local involvement.

Promote the Green Chain as a resource for health initiatives

3.36 Natural England have estimated⁷ that for every £1 spent on establishing healthy walking schemes, the National Health Service (NHS) could save £7.18p in the cost of treating conditions such as heart disease, stroke and diabetes. There is a significant role

⁷ Our Natural Health Service: *The role of the natural Environment in maintaining healthy lives: 2009*

for the Green Chain to play in the delivery of national and local policies including the NHS frameworks for coronary heart disease, diabetes, mental health, older people and children, and in the Department for Health's obesity strategy "Healthy Weight, healthy lives" (2008). It also can play an active role in the health objectives of the 2012 Olympics in London and the Government's Legacy Action Plan.

3.37 The national "Walking for Health" initiative continues to target those with poor health and low levels of physical activity. Part of Natural England's health campaign and hosted by the Ramblers and Macmillan Cancer Support, Walking for Health works at a local level to support borough-based walk schemes. In partnership with Natural England, Primary Care Trusts (PCT) and healthy walk co-ordinators, a healthy walks pack of 12 short self-guided walks on the Green Chain was introduced. It provides an important stepping-stone to more active use of the Green Chain for the less mobile. The free pack is promoted locally through a short video broadcast at promotional road-shows, in doctors' surgeries and community, leisure and faith centres.

3.38 The Green Chain takes an active role in partnering local projects in SE London through strategic health network meetings: These comprise of staff that are involved in health promotion, sport and leisure, education and environmental organisations e.g local walking and cycling networks and Physical Activity Partnerships. These networks then feed into the boroughs' Community Sport and Physical Activity Networks (CSPANs).

Provide educational opportunities to schools and higher educational centres

3.39 The Green Chain open spaces lie close to many schools through-out the area, and provide low cost learning facilities. The Green Chain Resource Directory, launched in 2004 supports educational opportunities by informing teachers and education providers what they can do and who can help with visits on 26 selected sites on the Green Chain. The directory has been updated and revised to include 3 new sites within the Green Chain's Southwark and Lewisham extension.

3.40 An annual schools outreach project currently enables Key Stage 1 and 2 pupils to visit selected sites on the Green Chain as part of an organised field study trip. To date over 50 primary schools have directly benefited from this project. The development of sign-posted circular trails at Charlton and Mottingham has provided further opportunities for schools to

use the open spaces as their “outdoor classroom”, while relationships with education providers have been cultivated.

3.41 In addition to schools, there would also be significant mutual benefit in establishing a closer working relationship with institutions of higher education such as colleges and universities. The common practice of under-graduate student placement schemes from local universities and colleges will also be explored by the Green Chain.

Contribute to protecting and enhancing London’s Bio and Geodiversity

3.42 A key objective of the original Green Chain Policy document is the conservation and enhancement of the ecological landscape. Biodiversity Action Plans and Habitat Action Plans have been produced at both a regional and borough level. The Green Chain has contributed to the production and implementation of these plans at both levels.

3.43 There are opportunities to enhance the ecological nature of the network of open spaces through improvements; The Working Party will be actively engaged in the development of management plans for parks and open spaces on the Green Chain to support wider ecological improvements at the landscape scale. Participation in the All London Green Grid is also supporting this in the longer term by bringing land-owners and others together in order to enhance biodiversity across the sub region.

3.44 The Green Chain will support boroughs’ efforts to achieve and retain recognised standards such as Beacon Status and the Green Flag Award, which benefit nature conservation amongst other things. Support will also be given to borough awards schemes such as the Bexley Environmental Challenge that recognise the value of local environmental champions.

3.45 Working in collaboration with the London Geo-diversity Partnership has enabled the partnership to raise the profile of sites of geological importance on the Green Chain, and the need for their on-going protection.

Integrate the Green Chain into a sustainable transport system for SE London

3.46 Walking and cycling as sustainable forms of transport have been rapidly rising up the political agenda with the causes of climate change now more widely recognised. In 2004 the *Walking Plan for London* was published, while initiatives such as *Legible London*⁸ and the investment by the Mayor's office in cycling and walking are moving this agenda forward in practical ways.

3.47 The Mayor for London's transport policy on dealing with congestion and promoting public transport has included a section on walking, reinforcing its credibility within transport planning. The findings of a Select Committee⁹ on walking in urban areas provides a wealth of facts to support walking as a sustainable mode of transport, while the Government has published advice to local authorities on encouraging walking.

3.48 There have been major developments in this area recently, through closer working with South Eastern Railways, the London Overground, Sustrans and Groundwork London. The fruits of this relationship have provided investment in projects to improve access to the Green Chain open spaces. In addition, the Green Chain has been successful in delivering a range of additional services through the borough transport plans which has enabled a number of additional services to be delivered, see text box (right).

Borough Transport Plans has

supported the Green Chain by:

- Improving access from train stations to the Green Chain
- Enabling local schools to value the Green Chain Walk as a local commuting route
- Installing interpretation to integrate the network with local facilities
- Running promotional campaigns to get more people engaged in active

3.49 New signed links connecting the Green Chain Walk through to Dulwich Park and Nunhead Cemetery were fully completed in 2009, and a new link to Royal Greenwich Park through Kidbrooke is being explored as part of the Olympic Legacy.

⁸ A way-finding system for London.

⁹ Environment, Transport and Regional Affairs Committees report **Walking in Towns and Cities** (HC 167-1, published 30 June 2001).

3.50 A recent Sustrans study- *Greenways for the Olympics and London (GOAL)*- shows how the Green Chain open spaces can also provide the function of a greenway (routes used by walkers, cyclists or horse riders), to connect people with facilities without using a car. In responding to this initiative, the preference remains for segregated routes for walkers and cyclists but shared use will be considered where it would not prejudice the safe use of the Green Chain Walk for walkers and it would not be detrimental to the character of the walk and area.

3.51 Over the next five years a key role for the Green Chain will be the delivery of sustainable transport bids through Transport for London and the All London Green Grid. It will continue to play an important role as an enabler and influencer to support partners to enhance linkages with sustainable modes of transport, and to encourage visitors to choose car-free travel alternatives such as walking and cycling when visiting the protected landscape of the Green Chain.

Contribute to regeneration initiatives

The Green Chain has its part to play in local regeneration initiatives. Boroughs will be encouraged to include Green Chain projects in their regeneration programmes, and other funding proposals. Tourism and cultural strategies are other means of regenerating areas and can also be supported by Sustainable Community Strategies that set clear targets for making areas safe for residents and visitors alike. Regeneration is also being delivered through the Olympic Delivery Agency, while co-ordination of the All London Green Grid framework has enabled close collaboration with local regeneration agencies.

3.52 The Green Chain Walk is an attraction for visitors to SE London, providing boroughs with a valuable resource in their tourism portfolio. Its extension into Southwark has provided new opportunities for linking-up cultural and heritage landmarks in our capital- notably the Horniman Museum, Dulwich Picture Gallery and Nunhead Cemetery. A possible extension linking Eltham Palace to the Royal Park in Greenwich via Kidbrooke provides a further regeneration opportunity. Regional Park designation¹⁰ could also

¹⁰ The London Plan identifies the SE London Green Chain as a regional park opportunity within an area of identified deficiency.

contribute to regeneration initiatives by encouraging inward investment and helping to create a favourable image of place.

3.53 The partner borough's regeneration plans and the Mayor's London Plan have identified specific areas where regeneration and development should be focussed, some of which fall within the Green Chain. Closer liaison with the agencies responsible for their development will be cultivated, including the Olympic Delivery Agency.

Provide a service that is available to all

3.54 Over a million people live within two miles of the Green Chain, many of whom are able to enjoy the diversity of facilities that are free. There is a general aim to provide access to the Green Chain for people in SE London, so there should be equality of opportunity. However for some people there are physical and psychological barriers that may serve to reduce their enjoyment and participation in the Green Chain. This may include footpath conditions in places that are unsuitable for people with limited mobility, others may feel intimidated by other users or unsafe in remoter parts of the Green Chain open spaces.

3.55 The Disability Discrimination Act (DDA) legislation bolsters the need to account for wider access, and introduced new duties on public authorities. Improved access for all is also supported in legislation through the Countryside and Rights of Way Act 2000, which requires local authorities to produce by law Rights of Way Improvement Plans that take account of mobility or visually impaired persons. The Green Chain will work with public and private land owners in association with organisations of disabled people to ensure that access on the Green Chain open spaces is DDA compliant, and with local authorities on their Rights of Way Improvement Plans.

3.56 In addition to Government legislation, two reports by the former Countryside Agency- "Paths without Prejudice" and "By All Reasonable Means" - make a persuasive case for the benefits to land-owners and open space service-providers in taking account of the needs of all in delivering services. The Government's non-statutory "Outdoors for All?" Diversity Action Plan (2008) also sets out what needs to be done to get more under-represented groups to frequent and enjoy green spaces.

3.57 With regard to cultural and ethnic barriers, the Black Environment Network (BEN) has underlined the value of a more inclusive open space service provision when this is tailored to the particular needs of the Black and Minority Ethnic (BME) community: Their report “Capturing Richness” is pertinent to the Green Chain project, and the ethnic and cultural diversity of SE London’s burgeoning population.

3.58 A number of new initiatives are also being introduced in partnership with organisations working on behalf of the disabled to enable better access for all: These include Green Chain audio guides that can be accessed through the phone or downloaded from the internet/PDA, and Braille interpretation plaques at key locations along the strategic walking route. Further consultation is also taking place with disability groups on new projects where these arise.

3.59 The schools outreach project provides an opportunity and focus for young children from disparate social and ethnic backgrounds to enjoy selected sites on the Green Chain through field study activities and play. In addition, initiatives such as the annual walking festival and free health walks pack enable vulnerable and hard-to-reach groups to benefit from the health and well being these green spaces provide.

PART FOUR

Getting There

Priorities

4.1 It is important that the Green Chain continues to develop its role in SE London by building on previous projects and embracing new opportunities and issues as set out in Part Three. The Green Chain has identified seven priority areas that will guide the core services and other planned activities for the next five years. These are:

1. Ensure the protection of the Green Chain open spaces
2. Maintain the Green Chain walking network
3. Improve the financial base of the Joint Operational Fund
4. Increase usage of the Green Chain
5. Develop partnerships
6. Subject to the agreement of partner authorities and local stakeholders, undertake an extension of the Green Chain Walk to Greenwich Park.
7. Co-ordinate the delivery of the All London Green Grid Framework within SE London.

Planned activities

Core services

4.2 Four of the five partner boroughs contribute to the Joint Operational Fund, which is the main source of funding for Green Chain core activities. These four partner boroughs will continue to receive a core service from the Green Chain as identified in Part Two.

Additional services

4.3 The Green Chain will be taking forward new initiatives based on the objectives in Part Three. These services will be focused on the partner boroughs, specifically Royal Greenwich and Lewisham and Southwark. The lower contribution to the Joint Operational Fund made by the London Borough of Bexley means that this partner borough will not directly benefit from these new services immediately.

How will this be delivered?

4.4 Delivering both the objectives in Part Three and the priorities provide a challenge for the partner boroughs. To meet this, three approaches will be adopted; as a deliverer, an enabler and an influencer. Figure Three illustrates this.

Figure 3. Approach adopted for the delivery of the Green Chain objectives

<p>As a deliverer <i>Implementing Green Chain objectives directly.</i></p>	<p>Project Officer Working Party Access Officer Contractors Boroughs Funders Volunteers</p>
<p>As an enabler <i>Supporting others to achieve Green Chain objectives.</i></p>	<p>Agencies Community groups Other bodies</p>
<p>As an influencer <i>Influencing strategy and policy in support of the Green Chain.</i></p>	<p>Joint Committee Boroughs Sub regional strategic organisations Regional bodies National organisations National Government</p>

Action Plan

4.5 The following Action Plan lays out a range of activities, headed up by each objective from Part Three. These cover both the core and additional services, some of which are borough specific and have been chosen according to need, opportunity and funding levels. A cost is attached to each of the actions, although for some the source of the funding is still unknown, but will be linked to

Action Plan costs

Joint Operation Fund	£34,100
Externally funded	£3,036,440
Projects with no identified funding	£210,000
Total Cost	£3,290,540

the revision of the fund raising strategy. In this situation the action plan is aspirational, providing goals for the Green Chain Working Party.

Evaluation

4.6 The Management Plan covers the next 5 years, and will be reviewed annually. It will report to the partner local authorities. The delivery of the activities in the Action Plan will be the measure of progress.

4.7 The established user questionnaire and web site statistical analysis will continue to provide comparative information to assess whether usage and enjoyment of the Green Chain open spaces has risen as a result of these activities.

4.8 Subject to staffing resources, an annual user survey will be used to gauge user satisfaction of the walking route under a range of key elements such as safety and ease of access.

GREEN CHAIN ACTION PLAN 2012-2017

Project	Location	Cost	Source of funding	Leader	Completion Date
Strengthen the Green Chain financial base					
1. Revise and update the Fund Raising Strategy, incorporating all projects in this Plan without funding.	Bexley, Bromley, Royal Greenwich, Lewisham, Southwark	-	-	Working Party	Summer 2013
2. Agree funding in principle for the Joint Operational Fund for April 2013 to March 2016.	Bexley, Royal Greenwich, Lewisham Southwark	-	-	Working Party	Autumn 2012
3. Undertake regional park feasibility study	Bexley, Bromley, Royal Greenwich, Lewisham. Southwark	£50,000	All London Green Grid/Joint Operational Fund	Working Party/Local Authorities	Summer 2013
Raise the profile of the Green Chain across the region					
4. Continue to renew, maintain and circulate the suite of promotional material.	Bexley, Bromley, Royal Greenwich, Lewisham, Southwark	£5,000 annually	Joint Operational Fund	Working Party/Project Officer	Ongoing
5. Review and update the Marketing Plan.	Bexley, Bromley, Royal Greenwich, Lewisham, Southwark	-	-	Working Party/Project Officer	Autumn 2014
6. Re-constitute the Marketing Advisory Group, to support the implementation of the Marketing Plan	Bexley, Bromley, Royal Greenwich, Lewisham,	-	-	Working Party/Project Officer	Autumn 2012

	Southwark				
7. Identify additional resources to assist in co-ordinating the promotion of walking across SE London.	Bexley, Bromley, Royal Greenwich, Lewisham, Southwark	-	-	Project Officer/Health Authorities	Ongoing
8. Undertake annual Monitoring Use of the Green Chain Walk to assess progress.	Bexley, Bromley, Royal Greenwich, Lewisham, Southwark		Transport for London	Working Party/Colin Buchannan	Ongoing
9. Install 5 information panels along the Green Chain Walk's Southwark extension.	Lewisham, Southwark	£10,000	Joint Operational Fund/ Transport for London	Project Officer	Spring 2013
10. Replace the boroughs nomadic travelling displays	Bexley, Royal Greenwich, Lewisham, Southwark	£5,000	Joint Operational Fund	Project Officer	Spring 2012
11. Participate in events and seminars to promote the Green Chain as a tourist destination.	Bexley, Bromley Royal Greenwich, Lewisham, Southwark.	£600 annually	Joint Operational Fund	Working Party/ Project Officer	Ongoing
Ensure the continued protection of the Green Chain open spaces					
12. Monitor and respond to all planning applications affecting the Green Chain.	Bexley, Bromley, Royal Greenwich, Lewisham, Southwark	-	-	Working Party/ Project Officer	Ongoing
13. Review and update the Green Chain Policy Document.	Bexley, Bromley, Royal Greenwich, Lewisham, Southwark	£5,000	Joint Operational Fund	Working Party/ Project Officer	Summer 2013
14. Respond to new strategic documents which are relevant to Green	Bexley, Bromley, Royal Greenwich,	-	-	Working Party/ Project Officer	Ongoing

Chain objectives.	Lewisham, Southwark				
15 Respond to relevant Local Development Framework documents.	Bexley, Bromley, Royal Greenwich, Lewisham, Southwark			Working Party/ Project Officer	Ongoing
Develop an effective walking network for the Green Chain					
16. Develop and deliver the extension of the Green Chain Walk to Greenwich Park via Kidbrooke and Blackheath as part of the Olympic Legacy	Lewisham, Royal Greenwich	£75,000	Joint Operational Fund/Transport for London	Working Party Project Officer/	Spring 2017
17. Promote a trail linking sites of geological importance along the Green Chain open spaces	Royal Greenwich, Bexley	£500	Joint Operational Fund/Curry Fund	Project Officer/ London Geo- diversity Group	Summer 2012
18. Manage the sign maintenance programme to accredited Walk London standards.	Bexley, Bromley, Royal Greenwich, Lewisham, Southwark	£7,000 annually	Joint Operational Fund/Bromley Transport Plan	Project Officer	Ongoing
19. Act on arising opportunities to improve conditions along the Green Chain Walk	Bexley, Bromley, Royal Greenwich, Lewisham, Southwark	£250,000	All London Green Grid	Project Officer	Ongoing
20. Develop opportunities to promote use of the 12 Green Chain circular Walks with partner health authorities	Bexley, Bromley, Royal Greenwich, Lewisham, Southwark	£5,000	Externally funded, source unconfirmed.	Working Party/Access Officer	2013
21. Establish new short circular trails where appropriate to compliment the trails at Charlton and Mottingham Woods trails.	Bexley, Lewisham, Southwark	£15,000	Transport for London	Project Officer	Summer 2016

Develop the Green Chain as a sub-regional resource					
22. Co-ordinate the development and delivery of the Green Chain Plus (Area 6) framework of the All London Green Grid, and support development of Areas 1, 5 and 7.	Bexley, Bromley, Royal Greenwich, Lewisham, Southwark	£5,000 annually	Greater London Authority/Design for London	Working Party/Project Officer	Ongoing
23. Deliver All London Green Grid project proposals sponsored by the Working Party within the Area 5 & 6 frameworks.	Bexley, Bromley, Royal Greenwich, Lewisham, Southwark	£475,000	Lottery, European and Mayors Fund	Working Party	On-going
24. Identify opportunities to aid the delivery of relevant borough strategies (see Strategic Links p 13)	Bexley, Bromley, Royal Greenwich, Lewisham, Southwark	-	-	Working Party/Project Officer	Ongoing
25. Identify and participate in relevant regional fora.	Bexley, Bromley, Royal Greenwich, Lewisham, Southwark	-	-	Working Party/Project Officer	Ongoing
26. Identify and develop links with agencies, organisations and community groups with complementary objectives to the Green Chain.	London and in Bexley, Bromley, Royal Greenwich, Lewisham and Southwark	-	-	Working Party/Project Officer	Ongoing
Increase community involvement in the Green Chain					
27. Co-ordinate and deliver an annual Green Chain walking festival in partnership with community groups and borough health walk co-ordinators.	Bexley, Bromley, Royal Greenwich, Lewisham, Southwark	£25,000 annually	Transport for London	Working Party/Project Officer	On going

28. Deliver photographic workshops for local people on the Green Chain, culminating in a competition and exhibition of framed prints of the winning entrants	Bexley, Bromley, Royal Greenwich, Lewisham, Southwark	£5,000 annually	Transport for London	Project Officer/Verve Arts	On going
29. Publish and distribute a quarterly Green Chain Events Calendar for distribution to local groups and friends of the Green Chain.	Bexley, Bromley, Royal Greenwich, Lewisham, Southwark	£1,000 annually	Joint Operational Fund	Project Officer	Ongoing
30. Support the development of local groups that support the objectives of the Green Chain.	Bexley, Bromley, Royal Greenwich, Lewisham, Southwark	-	-	Working Party/ Project Officer	Ongoing
31. Develop a “Friends of the Green Chain” umbrella group for community groups and individuals who support its wider objectives.	Bexley, Bromley, Royal Greenwich, Lewisham, Southwark			Working Party/ Project Officer	Spring 2012
32. Consult local stakeholders on any physical enhancements proposed by the Green Chain partnership	Bexley, Bromley, Royal Greenwich, Lewisham, Southwark			Working Party/ Project Officer	Ongoing
Promote the Green Chain as a resource for health initiatives					
33. Distribute and promote a health walks pack of 12 short circular trails on the Green Chain, to be used as a health resource to under-represented groups.	Bexley, Bromley, Royal Greenwich, Lewisham, Southwark	£5,000	Transport for London	Project Officer/	Winter 2016

34. Support borough staff working on healthy walking initiatives.	Bromley, Royal Greenwich, Lewisham, Southwark	-	-	Project Officer	Ongoing
35. Participate in the SE London Physical Activity Network.	Bexley, Bromley, Royal Greenwich, Lewisham, Southwark	-	-	Project Officer	Ongoing
36. Participate in the preparation of Health Improvement Programmes.	Bexley, Bromley, Royal Greenwich, Lewisham, Southwark	-	-	Project Officer	Ongoing
37. Update the Green Chain Health Walks Pack to include 2 circular trails in Southwark	Southwark	£2,000	Southwark Council	Project Officer	Spring 2012
Provide educational opportunities to schools and higher education centres					
38. Co-ordinate and deliver the Green Chain Primary schools outreach project	Bexley, Bromley, Royal Greenwich, Lewisham, Southwark	£15,000 annually	Transport for London through borough transport plans	Project Officer/ External Contractor	Ongoing
39. Commission a short film promoting awareness of the Green Chain as a resource for field studies and targeting primary schools in SE London.	Bexley, Bromley, Royal Greenwich, Lewisham, Southwark	£2,000	Transport for London through borough transport plans	Project Officer/TARU Arts	Spring 2012
40. Update the Green Chain Resource Directory	Bexley, Bromley, Royal Greenwich, Lewisham, Southwark	-	-	Project Officer/ Working Party	Summer 2012

41. Re- establish the post of a Green Chain Access Officer to work with schools in outreach work.	Bexley, Bromley, Royal Greenwich, Lewisham, Southwark	£15-25,000 annually (<i>estimated on part or full- time basis</i>)	Joint Operational Fund/Heritage Lottery Fund	Working Party	Autumn 2015
Contribute to protecting and enhancing London's biodiversity					
42. Participate in the preparation and implementation of boroughs' Local Biodiversity Action Plans.	Bexley, Bromley, Royal Greenwich, Lewisham, Southwark	-	-	Working Party/ Project Officer	Ongoing
43. Support the delivery of the London Biodiversity Partnership's Heathland Heritage project	Bexley, Bromley, Royal Greenwich	-	-	Working Party/ Project Officer	On-going to Autumn 2012
44. Liaise with boroughs on obtaining quality standards for parks and open spaces, eg Green Flag and Beacon Status.	Bexley, Bromley, Royal Greenwich, Lewisham, Southwark	-	-	Working Party/ Project Officer	Ongoing
45. Through collaborative partnership with stakeholders, contribute to the aim of reducing environmental risks within the All London Green Grid	Bexley, Bromley, Royal Greenwich, Lewisham	-	-	Green Chain Plus Steering group/ Project Officer	On going
Integrate the Green Chain into a sustainable transport system for SE London					
46. Complete the implementation of the Walk London transport bid for the Green Chain Walk.	Bexley, Bromley, Royal Greenwich, Lewisham, Southwark	£100,000 per annum	Transport for London	Working Party/ Project Officer	Spring 2012

47. Work with South Eastern Railways and the London Overground on projects to integrate walking with the wider transport network	Bexley, Bromley, Royal Greenwich, Lewisham, Southwark	£15,000	Transport for London	Project Officer	Ongoing
48. Contribute to the research and development of "Greenways for the Olympics and London" (GOAL) in South East London	Bexley, Bromley, Royal Greenwich, Lewisham, Southwark	-		Project Officer/ Partner L.A's/ Sustrans	2012-17
49. Develop a promotional leaflet/booklet promoting sections of the Green Chain open spaces that are suitable for cycling.	Royal Greenwich, Lewisham, Southwark, Bromley, Bexley	15,000	Transport for London	Project Officer/ Sustrans/	Spring 2013
Develop partnerships with regeneration agencies					
50. Identify all relevant existing and planned regeneration initiatives.	Bexley, Bromley, Royal Greenwich, Lewisham, Southwark	-	-	Working Party/ Project Officer	Ongoing
51. Progress Green Chain projects within regeneration programmes.	Bexley, Bromley, Royal Greenwich, Lewisham, Southwark	-	-	Working Party/ Project Officer	Summer 2012 onwards
Provide a service that is available to all					
52. Develop and install 12 plaques incorporating audio guide download and braille information along key sections of the Green Chain Walk	Bexley, Bromley, Royal Greenwich, Lewisham, Southwark	£5,000	Transport for London	Dog Rose Trust	Summer 2015
53. Develop closer links with disability groups to ensure service provision is more accessible.	Bexley, Bromley, Royal Greenwich, Lewisham, Southwark	-	-	Project Officer	Ongoing

54. Develop audio guides for sections of the Green Chain Walk for internet and PDA download	Bexley, Bromley, Royal Greenwich, Lewisham	£10,000	Transport for London	Project Officer/	Spring 2016
55. Undertake outreach projects that target under represented groups, including people who are disabled and young people.	Bromley, Royal Greenwich, Lewisham, Southwark	£30,000	Externally funded, source unconfirmed	Project Officer	On going

APPENDIX ONE

References

- Colin Buchanan: *London's Strategic Walks Network: Key Performance Indicators, 2007-2012*
- Countryside Agency: *By all reasonable means, 2005.*
- Countryside Agency/Black Environment Network: *Capturing Richness, 2003*
- Countryside Agency: *Paths without Prejudice, 2001*
- Countryside Agency: *The countryside in and around towns: A vision for connecting town and country in the pursuit of sustainable development, 2005*
- Department for Health: *Healthy, weight, healthy lives: A cross-government strategy for England, 2008*
- Department for Culture, Media and Sport: *Making the most of the London 2012 Games: The Olympic Legacy Plan, 2008*
- Department for Environment, Farming and Rural Affairs: *Outdoors For All: Diversity Action Plan, 2008*
- EDAW: *London Strategic Parks Project Report 2006*
- English Heritage: *Register of Parks and Gardens of Special Historic Interest*
- Green Chain Marketing Advisory Group: *Green Chain Marketing Plan, 2001*
- Green Chain Working Party: *Green Chain Management Plan 2003-2008, 2003*
- Green Chain Working Party: *Green Chain Policy Document, 1977*
- HM Government: *The Parklands Spatial Framework, 2008*
- London Parks and Gardens Trust: *London Inventory of Historic Green Spaces*
- Manchester University: *Green Future: A Study of the Management of Multi-functional green spaces in England, 2005*
- Mayor of London: *The London Plan, Spatial Development Strategy for Greater London, 2008.*
- Mayor of London: *East London Green Grid Framework: Supplementary Planning Guidance, 2008*
- Mayor of London: *The Mayor's Transport Strategy 2001*
- Mayor of London: *The London Walking Plan ("Making London a walkable city"), 2004*
- Office of the Deputy Prime Minister. *Living Places, Cleaner, Safer, Greener, 2002.*
- Sustrans: *Central South Eastern Greenways- A consultation document, 2008*

APPENDIX TWO

Borough Core Strategy and Unitary Development Plan (UDP) policies for the SE London Green Chain

London Borough of Bexley

Core Strategy adopted June 2011

Policy CS15: Achieving an integrated and sustainable transport system

The Council will work to achieve a comprehensive, high quality, safe, integrated and sustainable transport system which makes the most of existing and proposed transport infrastructure within the borough and seeks to ensure a much improved and expanded role for public transport through the following actions:

- e protecting significant green corridors, and seeking opportunities to increase connectivity between the network of green spaces and habitats;
- i encouraging walking and cycling within the borough through implementation of local and strategic walking and cycling programmes, school travel plans, local safety schemes and the provision of facilities within development proposals and environmental improvement projects

Policy CS17 Green infrastructure

Bexley's green infrastructure, including open spaces and waterways will be protected, enhanced and promoted as valuable resources. In particular, this will be achieved by:

- a protecting metropolitan green belt and metropolitan open land from inappropriate development;
- d protecting and enhancing the biodiversity, heritage and archaeological values of open spaces, including the Rivers Thames, Cray, Shuttle and their tributaries within the borough;
- e protecting significant green corridors, and seeking opportunities to increase connectivity between the network of green spaces and habitats;
- f working in partnership, seeking funding and supporting projects to promote the restoration and enhancement of open spaces, public realm and the Blue Ribbon Network within the borough;

London Borough of Bromley.

UDP adopted July 2006

Policy G.7

Development proposals will be required to respect and not harm the character or function of the Green Chain and the Green Chain Walk, as defined on the Proposals Map. Measures to protect the designated area are to include the use of suitable

screening, landscaping or in appropriate areas the planting of native vegetation and enhancing wildlife habitats.

London Borough of Royal Greenwich

UDP adopted July 2006

Policy O5:

Areas of Metropolitan Open Land forming part of the “Green Chain” which is defined on the Proposals Map, will be promoted as a regional and local outdoor recreational resource and visual amenity in conjunction with other parts of the Green Chain in South East London. The six objectives for the Green Chain are:

- (a) To improve and encourage the provision of suitable recreational facilities, with an emphasis on those serving a wide range of South East London and/ or requiring open land.
- (b) To safeguard the open land from built development and maintain its positive contribution in providing a visual and physical break in the built up area of London.
- (c) To conserve and enhance the visual amenity and ecological aspects of the landscape.
- (d) To improve public access to and through the area.
- (f) To promote an overall identity for the area in order to increase public awareness of available recreational facilities.
- (e) To encourage the collaboration and co-operation of the various public and private agencies, owners, organisations, clubs, etc. in the area to achieve the above objectives.

Policy O15

Existing footpaths will be safeguarded and new footpaths created to and through open spaces and places of interest, where they do not adversely affect nature conservation. The Council will endeavour to create a signposted network of continuous and circular routes. In particular the “Green Chain Walk” footpath network will be improved and extended and new links created wherever possible.

London Borough of Lewisham.

Core Strategy adopted June 2011

Policy 12

Open space and environmental assets

1. In recognising the strategic importance of the natural environment and to help mitigate against climate change the Council will:

- a. conserve nature
- b. green the public realm
- c. provide opportunities for sport, recreation, leisure and well-being.

2. This will be achieved by:

- a. protecting the character, historic interest and amenity of, and within, open spaces, as well as the effects of development outside their boundaries
- b. protecting Metropolitan Open Land, open space, urban green space and green corridors from inappropriate built development to ensure there is no adverse effect

on their use, management, amenity or enjoyment in accordance with the principles of PPG2 and the London Plan

c. maintaining and improving the publicly accessible open space network, such as the Waterlink Way, the Thames Path, the South East London Green Chain, the East London Green Grid, parks and gardens, playing fields, nature reserves, allotments, community gardens, amenity green space, cemeteries and churchyards as well as smaller open spaces that have townscape quality

d. designating additional Metropolitan Open Land in accordance with the London Plan definitions, in particular Sydenham Wells Park, Horniman Gardens and Telegraph Hill Park due to the role they perform in the South East London Green Chain

Policy 14

Sustainable movement and transport

2. A network of high quality, connected and accessible walking and cycling routes across the borough will be maintained and improved, including Waterlink Way, the South-East London Green Chain, the Thames Path, and new connections throughout the Deptford New Cross area.

London Borough of Southwark

Core Strategy- Adopted February 2011

Policy 2 – Sustainable transport

Our approach is:

We will encourage walking, cycling and the use of public transport rather than travel by car. This will help create safe, attractive, vibrant and healthy places for people to live and work by reducing congestion, traffic and pollution.

Policy 11 – Open spaces and wildlife

Our approach is:

We will improve, protect and maintain a network of open spaces and green corridors that will make places attractive and provide sport, leisure and food growing opportunities for a growing population. We will protect and improve habitats for a variety of wildlife.

We will do this by:

- Continuing to protect important open spaces from inappropriate development. These will include parks, allotments, sports grounds, green chains, sites of importance for nature conservation (SINCs) and cemeteries. Large spaces of importance to all of London will be protected (Metropolitan Open Land) as well as smaller spaces of more borough-wide and local importance (Borough Open Land and Other Open Spaces).
- Promoting and improving access to and links between open spaces.

APPENDIX THREE

Regional policies relating to the SE London Green Chain

The London Plan (Adopted 2010)

London's Places

Strategic network of open spaces

Policy 2.18 | Green infrastructure: the network of open and natural spaces

Strategic: The Mayor will work with all relevant strategic partners to protect, promote, expand and manage access to London's green infrastructure of multi-functional green and open spaces and to secure benefits including, but not limited to, biodiversity, landscape, culture, building a sense of place, the economy, sport, recreation, local food production, mitigating and adapting to climate change, water management and the social benefits that promote individual and community health and well-being.

Planning decisions: Development proposals should:

- Incorporate appropriate elements of open space that are integrated into the wider network of green infrastructure.
- Encourage the linkage of green infrastructure to the wider public realm to improve accessibility for all and develop new links, including Green Corridors and Green Chains and the innovative use of street trees.

London's Response to Climate Change:

Climate Change Adaptation

Policy 5.10 Urban greening:

LDF preparation: Boroughs should identify areas where urban greening and **green infrastructure** can make a particular contribution to mitigating the effects of climate change, such as the urban heat island.

Policy 5.12: Flood risk management:

Strategic: The Mayor will work with all relevant agencies including the Environment Agency to address current and future flood issues and minimise risks in a sustainable and cost effective way

London's Transport:

Better streets

Policy 6.10 | Walking

LDF preparation: DPDs should:

- Identify, promote and complete the relevant sections of the strategic walking routes shown on Map 6.3, as well as borough routes.

London's Living Places and Spaces

Historic environment and landscapes

Policy 7.8 | Heritage assets and archaeology

LDF preparation: Boroughs, in consultation with English Heritage, Natural England and other relevant statutory organisations, should include appropriate policies in their LDFs for identifying and protecting heritage assets scheduled ancient monuments, archaeological assets, memorials and **natural landscape character** within their area.

Protecting London's Open and Natural Environment

Policy 7.17 Metropolitan Open Land

Planning decisions: The strongest protection should be given to **London's Metropolitan Open Land** and inappropriate development refused, except in very special circumstances, giving the same level of protection as in the Green Belt. Essential ancillary facilities for appropriate uses will only be acceptable where they maintain the openness of MOL.

Policy 7.19 Biodiversity and access to nature

Planning decisions: Development proposals should: wherever possible, make a positive contribution to the protection, promotion and management of biodiversity.

Mayor's Transport Strategy (Adopted 2011)

Proposals to encourage more cycling and walking

The cycling revolution

Improving cycle infrastructure, cycle training and safety

Proposal 54

The Mayor, through TfL, and working with the boroughs and other stakeholders, will deliver improvements to cycling infrastructure and training to support the cycling revolution, including:

- Enhanced cycle links to the Olympic Park by 2012 and the development of a wider network of Greenways across London

Making walking count

Introduction:

Proposal 59

The Mayor, through TfL, and working with the London boroughs, employers, schools, community groups, other organisations and individuals, will bring about a step change in the walking experience in London to make walking count.

Providing a safe, comfortable and attractive street environment

Proposal 60

The Mayor, through TfL, and working with the London boroughs and other stakeholders, will improve the walking experience by enhancing the urban realm and taking focused action to ensure safe, comfortable and attractive walking conditions, including:

- Development of the 'key walking route' approach, to encourage walking and improve corridors between local destinations where people want to travel, encapsulating squares and open spaces where appropriate (for example, London parks)
- Delivery of the seven Strategic Walk Network routes, separate from, but alongside the development of, Greenways
- Improving access, safety and security between the station and surrounding areas for pedestrians (and cyclists) to encourage active and smarter travel
- Encouraging the extension of a network of linked green spaces (namely, the All London Green Grid)

Promoting the health and environmental benefits of walking

Proposal 62:

The Mayor, through TfL, working with London boroughs, developers and other stakeholders will promote walking and its benefits through information campaigns, events to raise the profile of walking, and smarter travel initiatives such as school and workplace travel plans.

All London Green Grid: Supplementary Planning Guidance (Adopted March 2012)

Implementation Point 1: Protecting the network of green infrastructure

The Mayor will work with boroughs, authorities adjoining London and other stakeholders to put into place appropriate mechanisms to ensure that green infrastructure is protected, enhanced, and managed to support the wider benefits of a network of multifunctional green infrastructure within London and beyond.

SPG Implementation Point 2: Green Grid Area partnership working

The 11 area partnerships should prepare Green Grid Area Frameworks that identify objectives and projects, taking into account cross boundary integration and promoting opportunities for improving the provision, quality, functions, linkages, accessibility, design, planning and management of the green infrastructure network.

Implementation Point 3: Governance and delivery

The Mayor will work with boroughs and other stakeholders to put into place the appropriate governance structures needed to drive forward the All London Green Grid and secure the resources for its delivery.

SPG Implementation Point 4: Integrating the ALGG

A The Mayor will and boroughs and other partners should incorporate the SPG Implementation Points, the strategic opportunities set out in Chapter 5 and appropriate area frameworks into policies, plans, proposals and projects, including infrastructure delivery plans, working together across boundaries where relevant.

B Development and regeneration proposals should plan, locate and design new and improved green infrastructure and manage the ALGG as an interdependent, integrated and multifunctional open and green space network.

Implementation point 5: Delivery Plan

The Mayor will work with partners to prepare a Delivery Plan that identifies and develops key Green Grid projects for investment, collated from the Green Grid Area Frameworks. The Plan will identify a phased delivery programme and will be regularly updated.

SPG Implementation Point 6: Creation, improvement and management

Development and regeneration proposals should demonstrate that adequate long term funding is provided for the creation, improvement and management of the ALGG, subject to the appropriate statutory tests, to maintain high quality and to achieve the associated benefits.

Implementation Point 7: Achieving the benefits of green infrastructure

The Mayor, boroughs and other stakeholders should work in partnership to address all opportunities to achieve the appropriate range of diverse functions and benefits from the network of green infrastructure both within and around London.